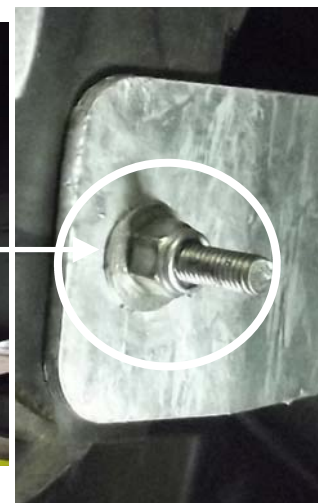


GLMFF9899 Mud Flap Mounting Kit Fitting Guide



Cut the wheel arch flare as shown and remove the plastic rivet, the M6 bolt can now be fitted pointing out as in picture 2 (To remove the plastic rivet just push the pin in its centre through and catch it from round the back of the rivet)

Fit the bolt from behind using the two smaller washers and tighten enough to hold the bracket up. The mud flap will be fitted over this bolt and nut then secured with a larger washer and another nut.



Temporarily fit the mud flap and square it up, once square drill a 6.5mm hole in the plastic shield and fit the bolt, you may loosen the chassis bracket to make it easier to fit the bolt and nut.



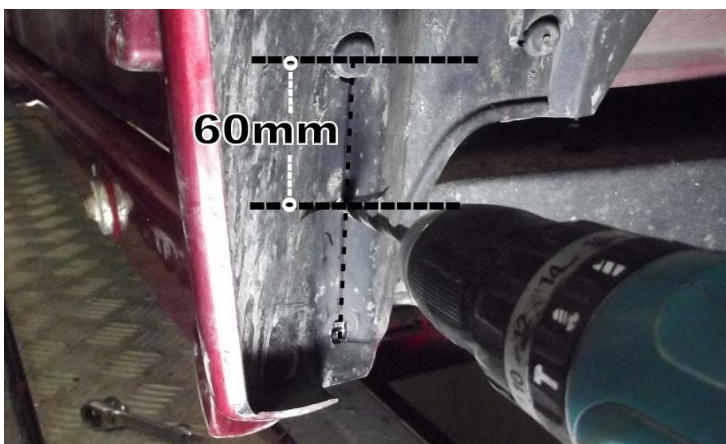
Drill the two remaining holes in the plastic shield then fit and tighten the bolts.

If required you can put the chassis bracket behind the plastic shield after the holes are drilled, this is just for looks.



This shows how you can cut the mud shield if you do not want to see it hanging down behind the mud flap.

If you are fitting the mud flaps with sill bars the brackets will need to be moved up by 60mm



Mark out and drill a 6.5mm hole 60mm lower than the hole above as in the picture. Once this is done the rest of the fitting is done the same way



You will also mount the horizontal bracket on the upper slot of the chassis bracket